



Cllr Kieron Williams
Leader of Southwark Council
Cabinet office, 160 Tooley Street
London SE1 2QH

Sent by email to: kieron.williams@southwark.gov.uk

23 July 2021

Dear Councillor Williams,

Urgent: please halt the development at Jocelyn Street Park / Peckham Green (Flaxyards 16/AP/4018) – an area with precious little open green space

CPRE London is a membership-based charity with 2500 members across London, concerned with the preservation and enhancement of London’s vital green spaces, as well as the improvement of London’s environment for the health and wellbeing of all Londoners.

We are extremely concerned to have learned at this very late stage about the proposed development on Jocelyn Street Park / Peckham Green and urge the council to halt plans for developing this site.

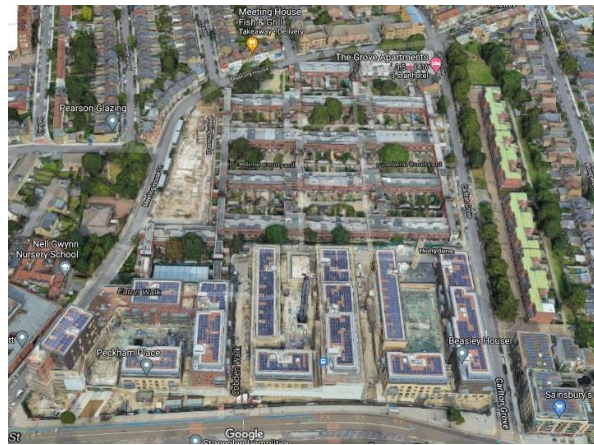
- It is an incredibly important, much-loved park, well-used by local residents and workers for exercise, community gatherings, religious events and other leisure activities, vital for health and well-being.
- There is not nearly enough open green space in the area. Southwark’s policy sets a standard of 0.72 ha of park space per 1,000 population (2013 Open Space Strategy). There is very little open green space in the immediate area so it is highly unlikely this standard is even close to being met.
- This situation will be exacerbated by projected population increase in the area by reducing per head provision further. There is a major housing development nearly complete nearby. Morrisons and Lidl sites close by are likely to be developed for mixed-use residential & commercial in the near future.
- Alternative locations can and should be found for the proposed development. Proposals to develop the Aylesham Centre and other nearby sites can provide social housing without loss of green space.
- The development will reduce the ability to manage the impacts of climate change, including the urban heat island effect and increased extreme rainfall events.



A highly densely populated area with very little open green space / park provision - very unlikely to be meeting the council's green space standards for park provision



Morrisons and Lidl sites directly south of the park likely to be developed for mixed-use residential / commercial in future, increasing the local population further



Major new development at Peckham High St / Queen's Road junction with no major areas of open green space

Please halt this damaging development. Though construction is due to begin in August, there is still time for you to step in and stop this highly damaging scheme. We believe there are many reasons why the loss of this park will be a huge loss for the local community and the new residents who will come to live in new housing developments nearby. **We urge Southwark to please reconsider and save this green space for generations to come.**

Yours sincerely,

John Sadler
Campaigns Officer, CPRE London